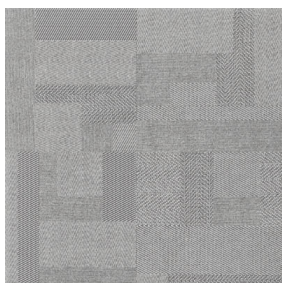


DIGITAL TWEED

This stunning color body porcelain from Italy mixes the comfort of a woven fabric with the modern patchwork and muted colors. Digital Tweed boasts cozy earth tones and a unique eye catching design.



WALNUT



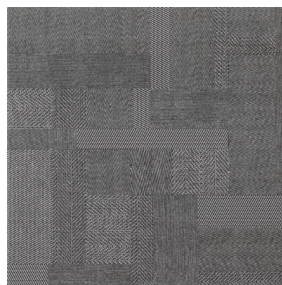
GREY



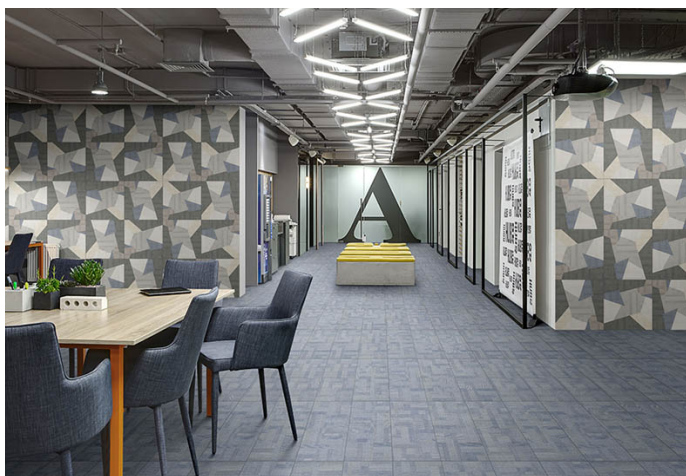
PATCHWORK



JEANS



SMOKE



TECHNICAL INFORMATION

PEI	4
MOHS	N/A
SCOF WET	>0.42
WATER ABSORPTION	<0.5%
CHEMICAL STAIN RESISTANT	RESISTANT
FROST RESISTANT	RESISTANT
COLOR VARIATION	2

SIZE AVAILABILITY & PACKAGING INFORMATION

24x24: 1 BOX = 4 PCS = 15.49 SF = 46.08 LBS/ BX; 32 BX/PL

12x24: 1 BOX = 7 PCS = 13.56 SF = 50.4 LBS/BX; 40 BX/PL